



Managing impacts on nature: Nestlé's approach in our milk supply chain

Anna Turrell
Senior Public Affairs Manager – Sustainability
Nestlé UK & Ireland

Nestlé at a glance

442

number of factories worldwide



339 456

number of employees



More than 1 billion
number of servings consumed per day



4.1 million

number of families earning
a livelihood because of us



695 000

farmers working directly
with Nestlé



Nestlé in the UK & Ireland market: 20 Sites

Nestlé UK Factories

- 1 Girvan
- 2 Dalston
- 3 Fawdon
- 4 York
- 5 Halifax
- 6 Tutbury



Distribution Centres

- 1 York
- 2 Bardon

Head Offices

- 1 Nestlé UK - Gatwick
- 1 Nestlé Professional - Gatwick
- 1 Nestlé Purina - Gatwick
- 1 Mövenpick Ice Cream - Gatwick
- 1 Nespresso - Gatwick
- 1 Nestlé Nutrition - Gatwick
- 2 Nestlé Ireland - Dublin
- 2 Nestlé Nutrition - Dublin
- 3 Nestlé Waters - Rickmansworth
- 4 Cereal Partners UK - Welwyn Garden City
- 5 Lactalis/Nestlé - Redhill
- 6 Vitaflo - Liverpool

Nestlé in the Market Factories

Cereal Partners

- 1 Staverton
- 2 Bromborough

Wyeth Nutritionals Ireland

- 1 Askeaton

Nestlé Waters

- 1 Buxton

Purina PetCare

- 1 Sudbury
- 2 Wisbech
- 3 Liverpool

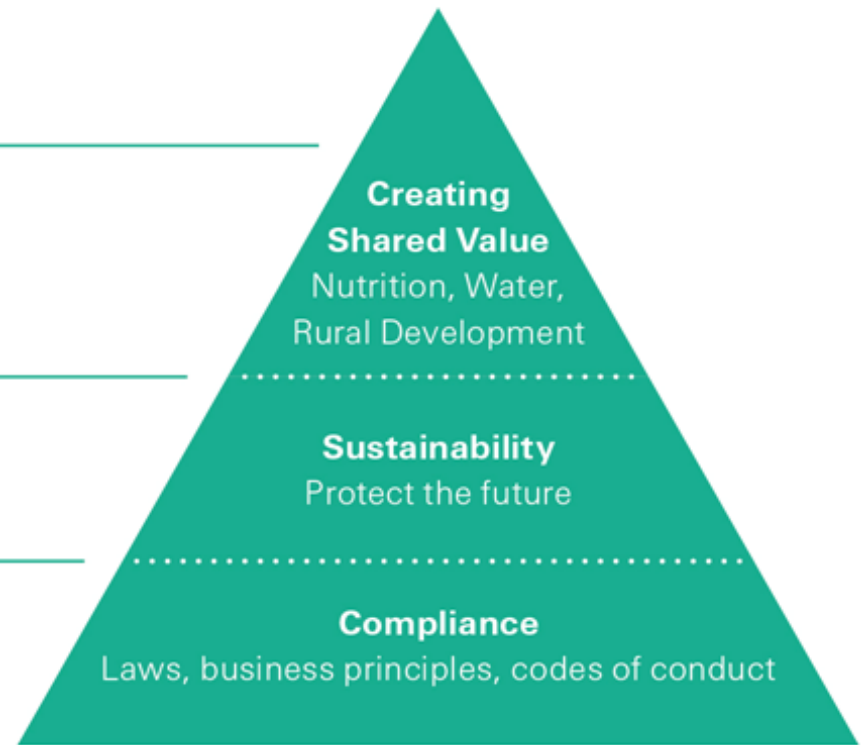
Creating Shared Value

“For a company to be successful over time and create value for shareholders, it must also create value for society.”

“... beyond sustainability, to create value for shareholders and society - integrally linked to our core business ...”

“... meet the needs of the present without compromising future generations ...”

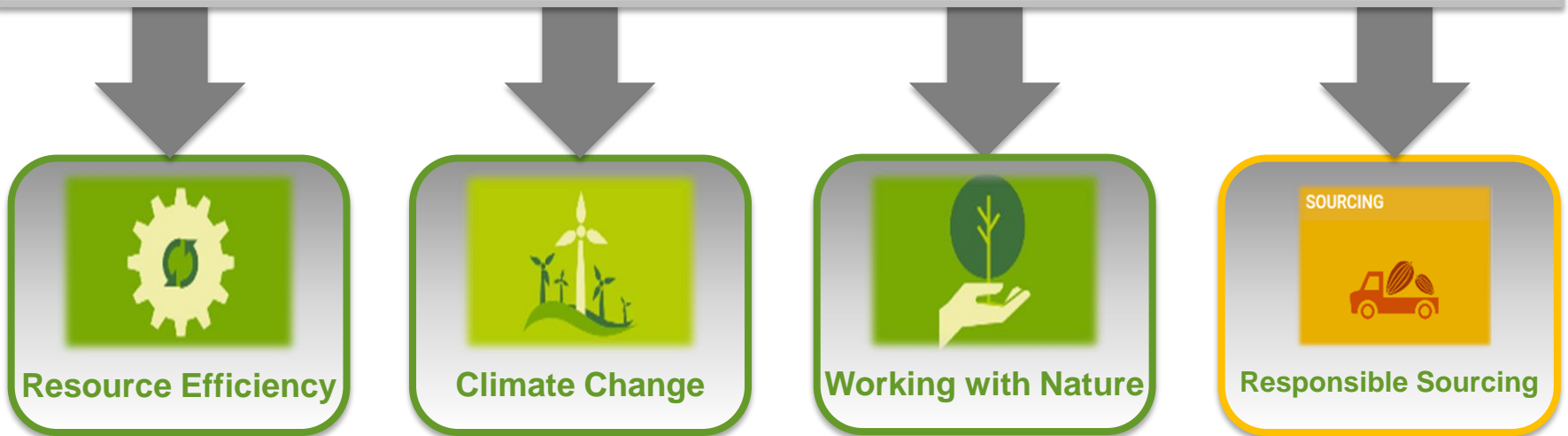
“... comply with the highest standards ...”



Our approach to environmental sustainability

Our vision

Establish Nestlé UK&I as a sustainable, low carbon business, providing industry leadership through collaboration.



Working with nature



Ambition:

Resiliency in our value chain through the preservation and restoration of the ecosystems which we depend upon.

Elements:



Biodiversity



Water



Soil

Priority Resources:

Dairy

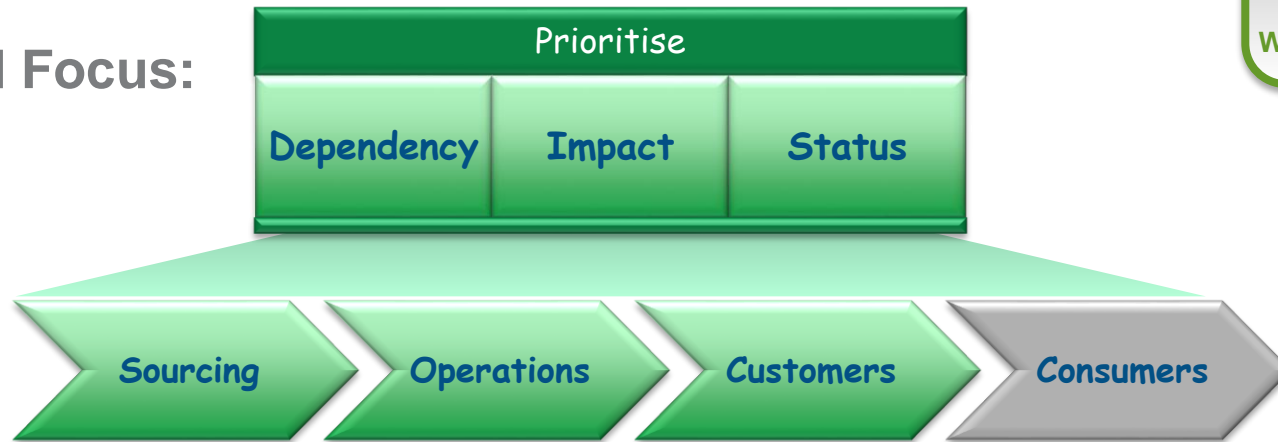
Water

Cereal

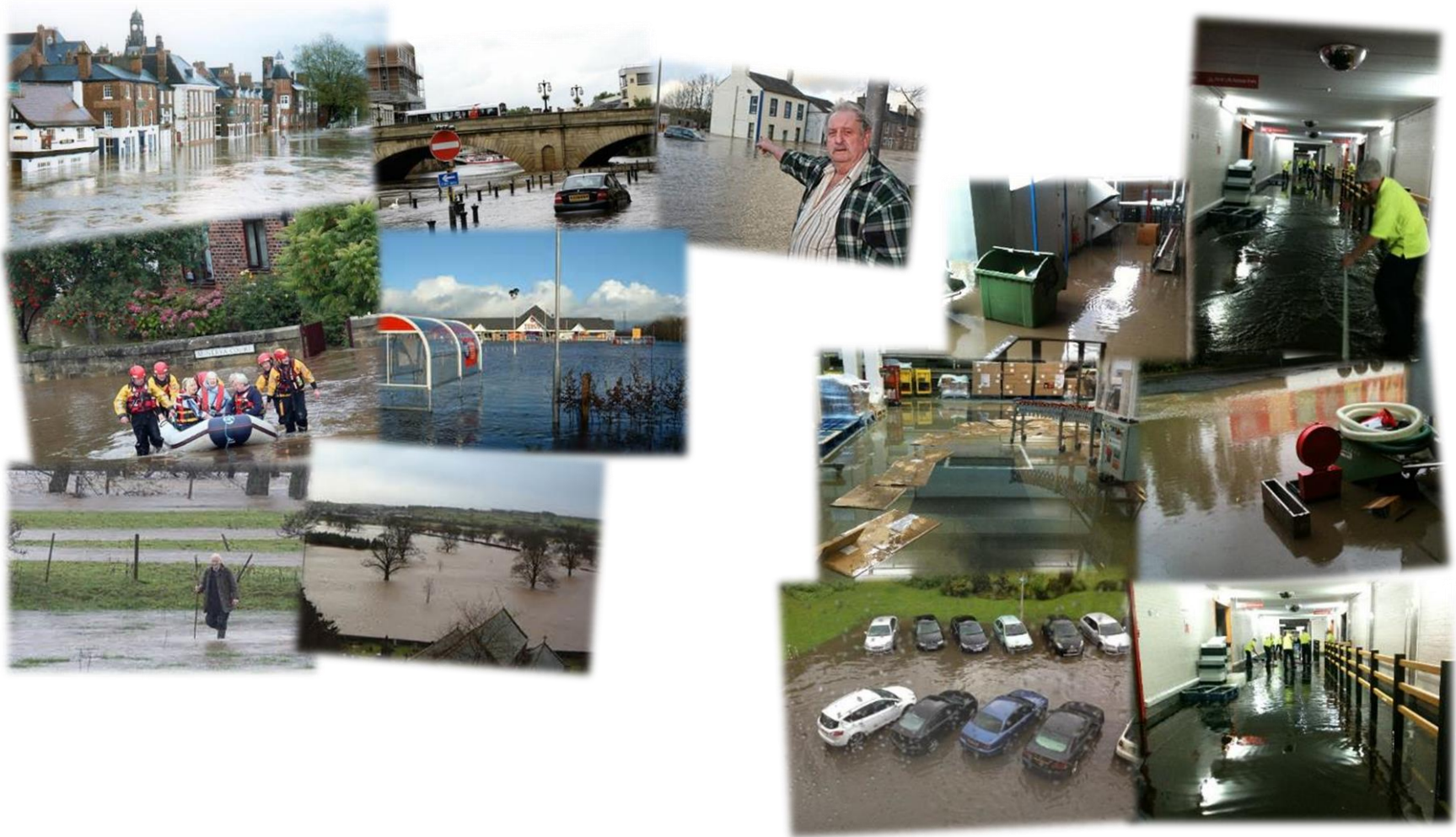
Working with nature



Proposed Focus:



The local affects of climate change



Protecting the business



Risk Score	Flooding	Drought	Cold stress	Heat stress	Other
Dalston	5.0	0.0	5.8	8.6	3.0
Tutbury	7.0	4.3	5.7	6.3	3.2
Fawdon	15.0	0.0	4.0	10.0	0.0
Girvan	4.8	3.8	5.7	6.0	9.4
Hallfax	2.5	0.0	6.2	4.7	8.4
York	2.2	3.5	3.6	6.6	7.0
Aintree	4.2	2.0	3.5	2.6	4.3
Sudbury	4.8	2.3	5.9	6.8	5.0
Wisbech	6.0	8.0	2.8	6.3	5.0
Bromborough	2.8	1.8	4.0	7.3	3.4
Staverton	6.5	1.3	7.8	9.6	6.8
Askeaton	4.7	2.6	4.9	6.2	4.6
Buxton	4.0	5.5	8.9	3.0	6.8

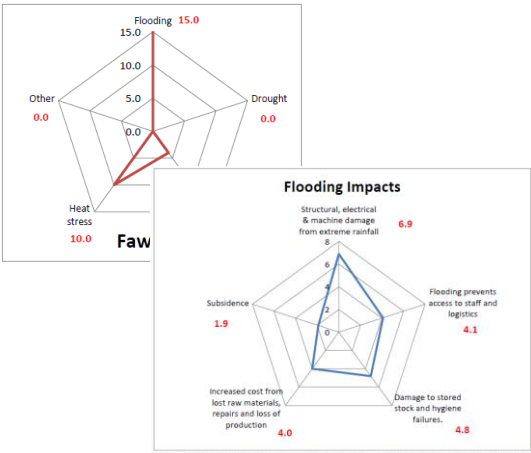
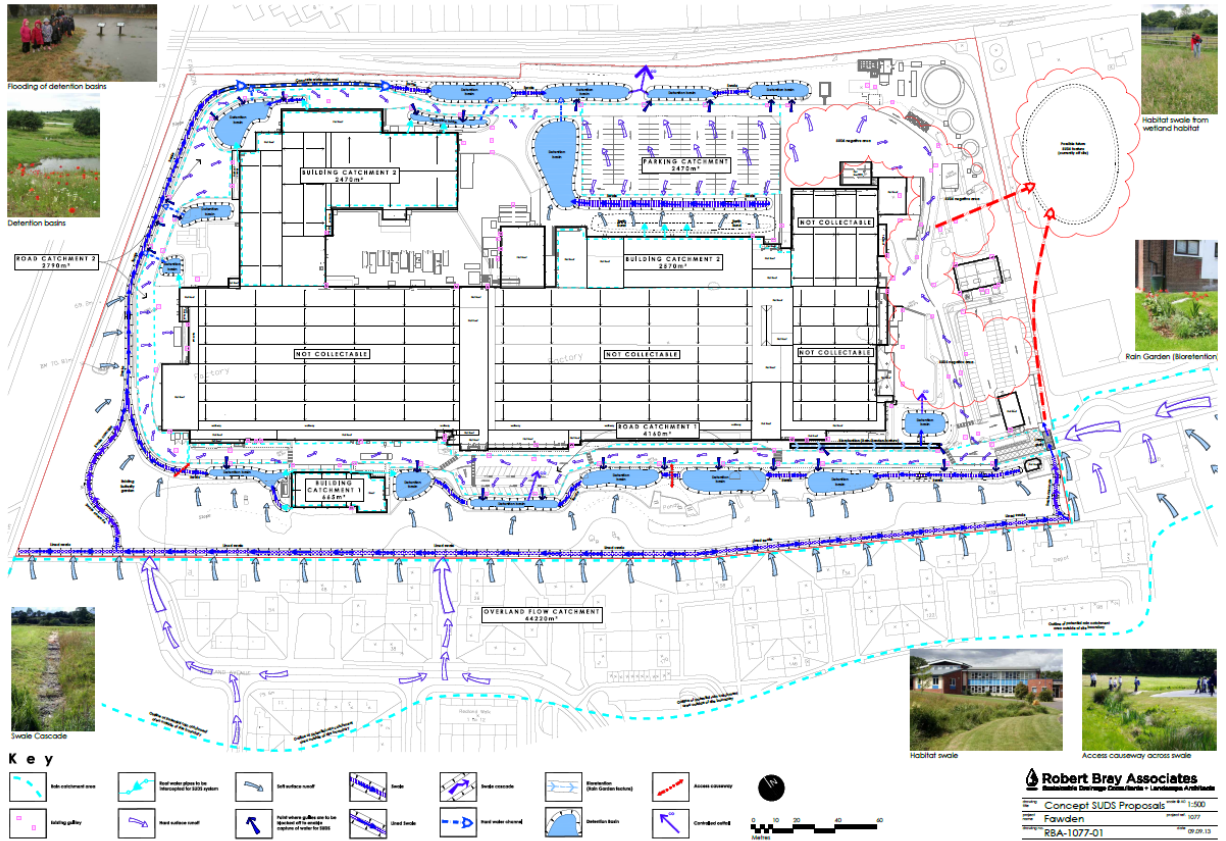


Figure 17. Business risk scores associated with the main impacts from flooding on Nestlé UK&I manufacturing sites

Robert Bray Associates
 Sustainable Drainage Solutions • Landscaping & Horticulture
 Concept SUDS Proposals 1:500
 Fawdon 1/20/2018
 R&A-1077-01
 Robert Bray Associates • 10000, Greenfield Road, Stock, Ohio, 44224 USA • Tel: 614 765 1000
 Email: info@robertbray.com • www.robertbray.com

Going beyond our operations

